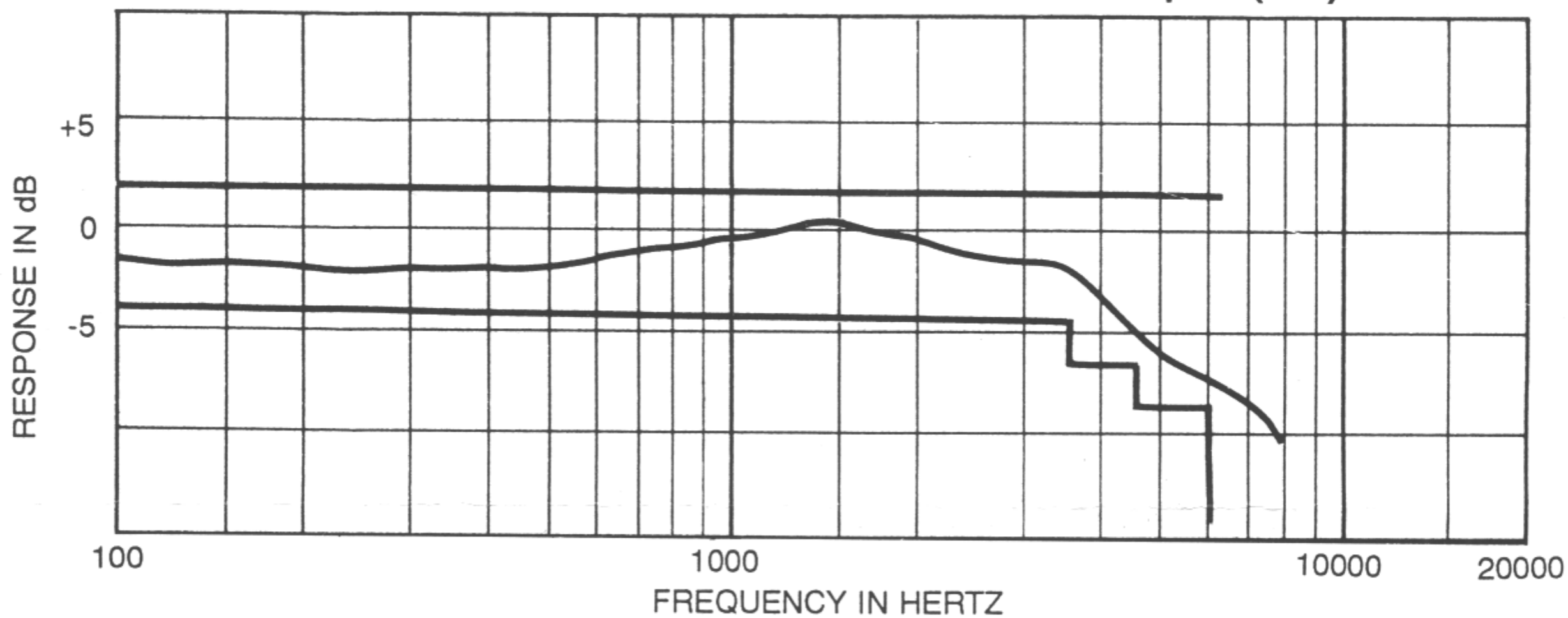


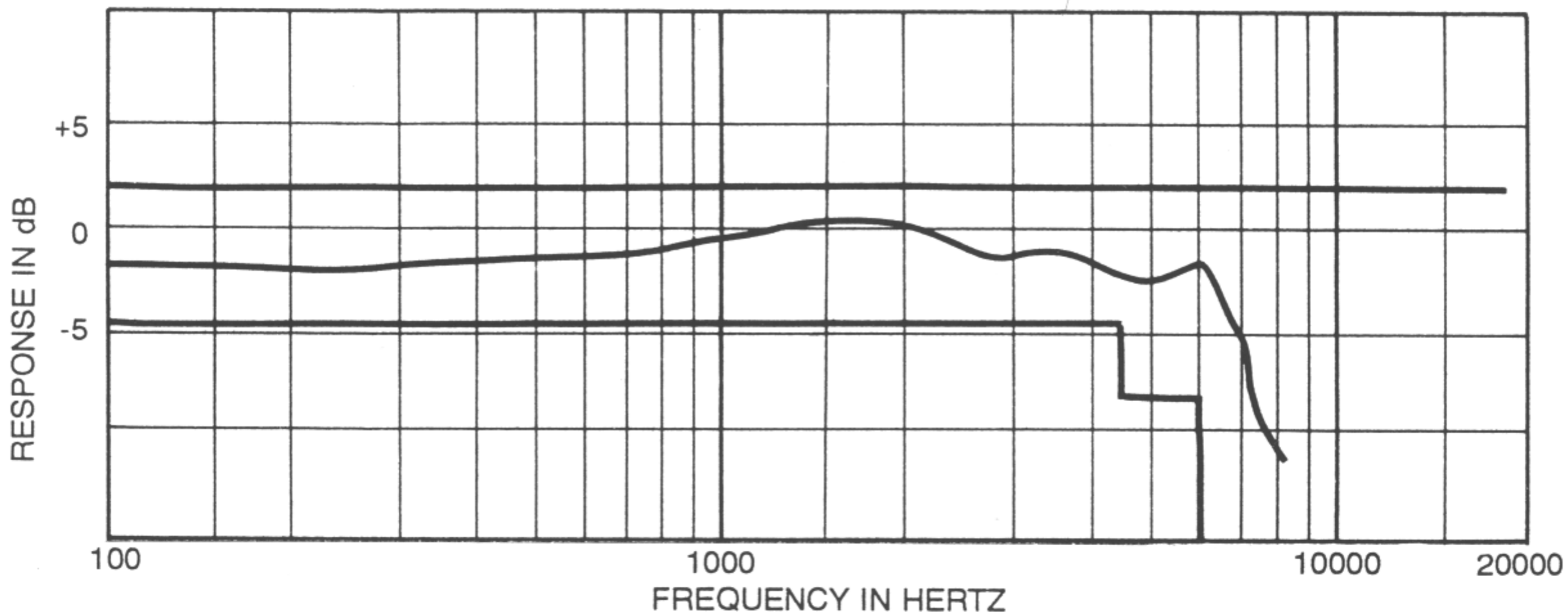
## **TDH SERIES AUDIOMETRIC EARPHONES SPECIFICATIONS**

<b>Receiver Type:</b>	dynamic, with metal diaphragm
<b>Impedance:</b>	TDH-39P - 10 ohms is standard. 100 ohms impedance available. TDH-49P - 10 ohms TDH-50P - 60 ohms
<b>Frequency Response:</b>	100Hz to 8000Hz
<b>Continuous Power Rating:</b>	300 milliwatts at any single frequency in the 100Hz to 8000Hz range
<b>Linearity:</b>	linear for power inputs from 0 to 400 milliwatts
<b>Sensitivity:</b>	TDH-39P - 108dB $\pm$ 4dB SPL (Reference: 0dB = 20 $\mu$ PA) output with 1 milliwatt input at 1KHz  TDH-49P - 106dB $\pm$ 2dB SPL (Reference: 0dB = 20 $\mu$ PA) output with 1 milliwatt input at 1KHz  TDH-50P - 106dB $\pm$ 2dB SPL (Reference: 0dB = 20 $\mu$ PA) output with 1 milliwatt input at 1KHz
<b>Distortion:</b>	less than 1 percent

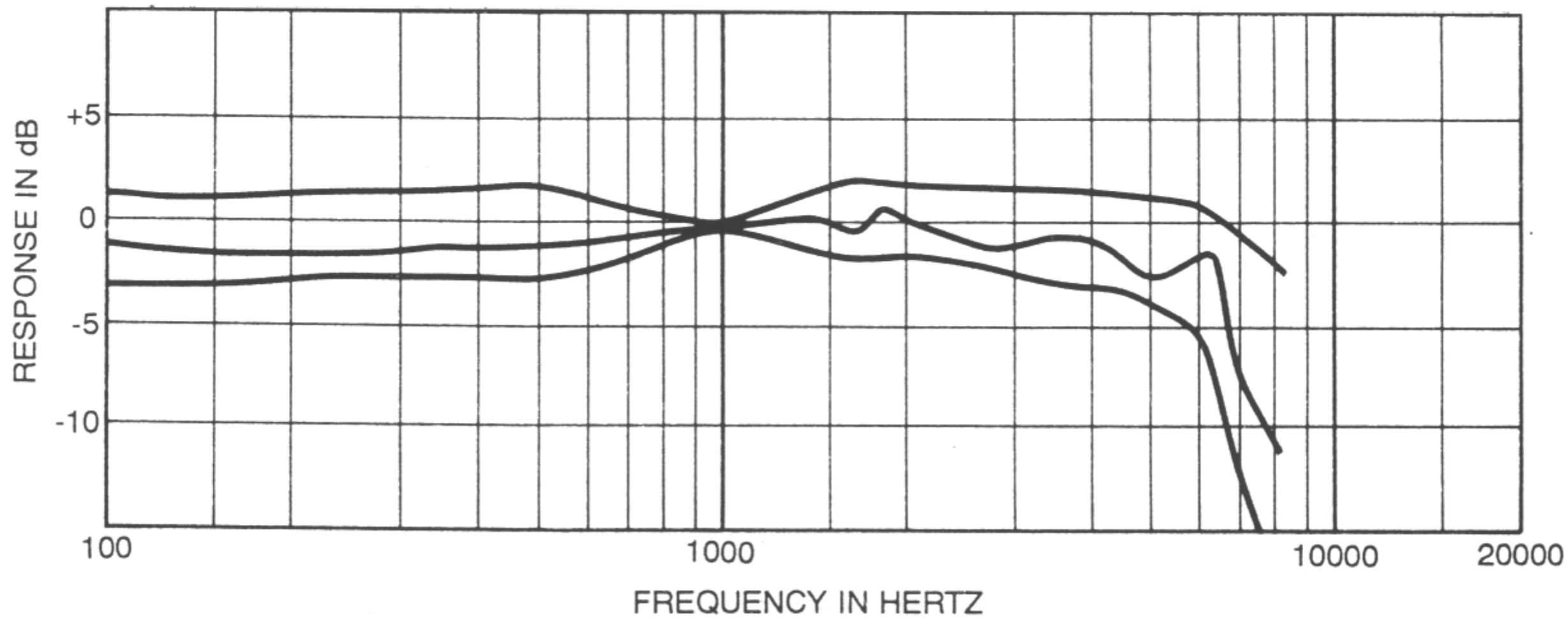
**FREQUENCY RESPONSE**  
**Model TDH-49P Earphone**  
**Weighted Down with 500 Grams on a 1A Coupler (6cc)**



**FREQUENCY RESPONSE**  
**Model TDH-49P in a Mod 51 Ear Cushion**  
**Weighted Down with 500 Grams on a 9A Coupler (6cc)**

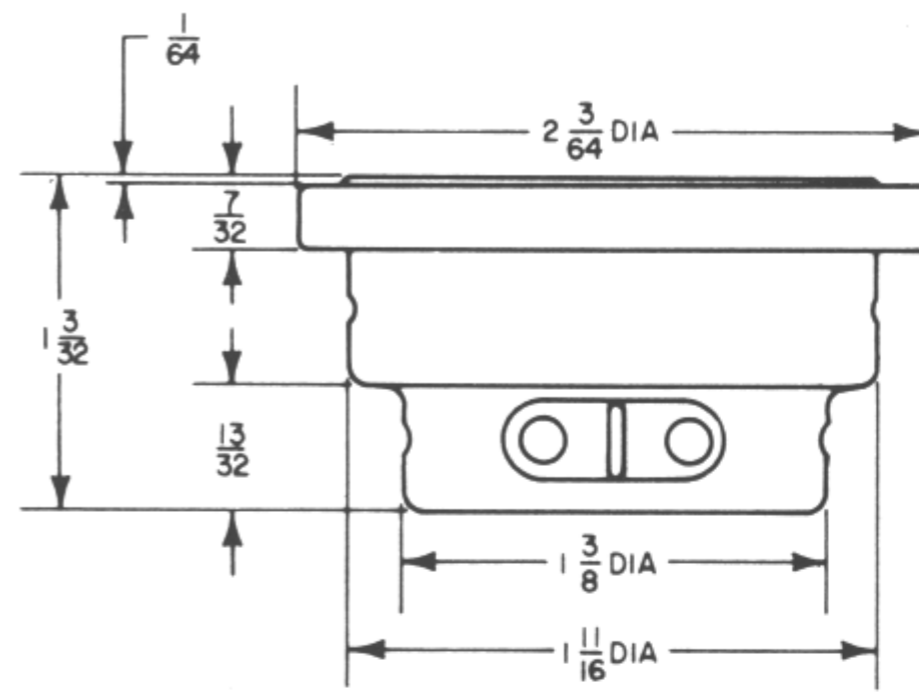


**FREQUENCY RESPONSE**  
**Model TDH-50P Earphone in a Mod 51 Ear Cushion**  
**Weighted Down with 500 Grams on a 9A Coupler (6cc)**



**OUTLINE DIMENSIONS**

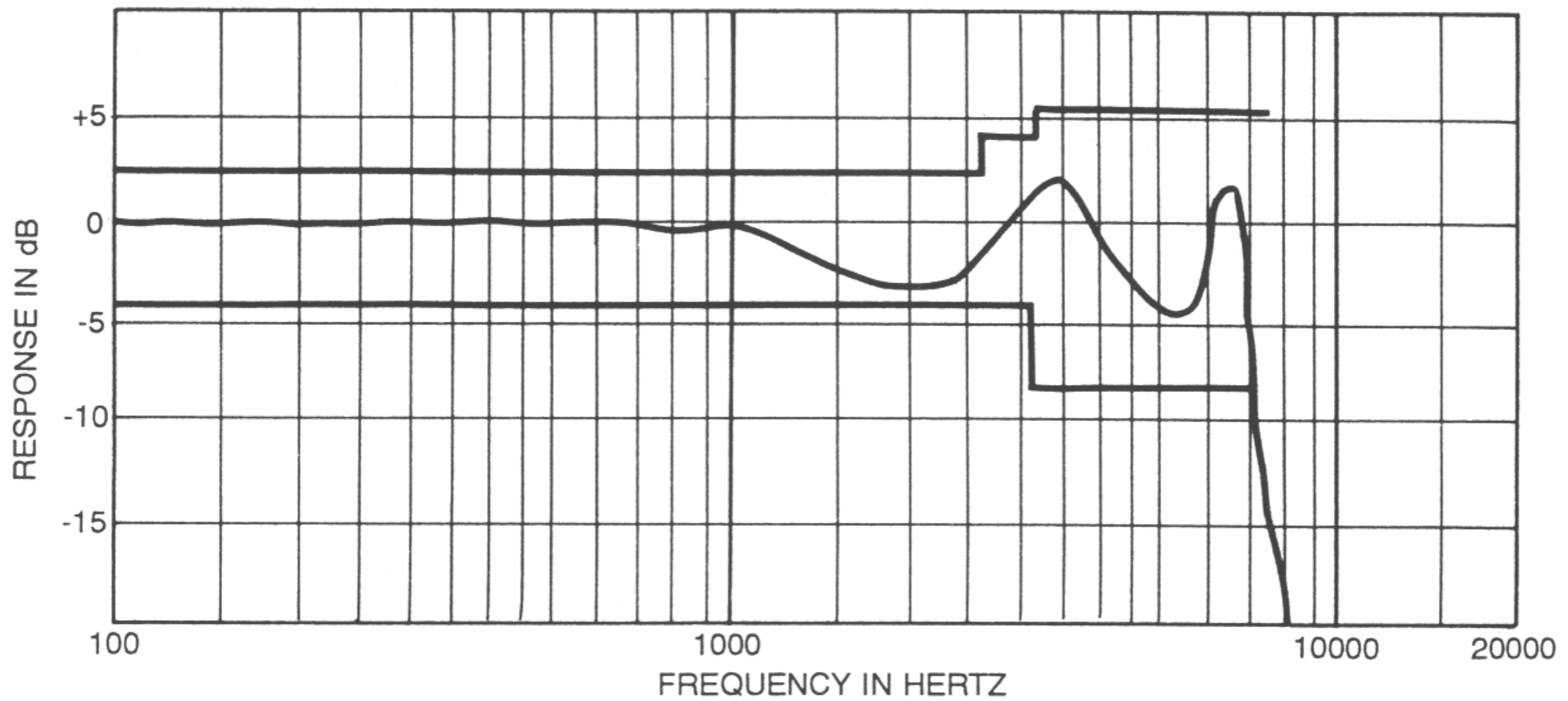
**Audiometric Earphones  
Model TDH-39P, TDH-49P, TDH-50P**



**FREQUENCY RESPONSE**

**Model TDH-39P Earphone**

**Weighted Down with 500 Grams on a 1A Coupler (6cc)**



**FREQUENCY RESPONSE**

**Model TDH-39P Earphone in a Mod 51 Ear Cushion  
Weighted Down with 500 Grams on a 9A Coupler (6cc)**

